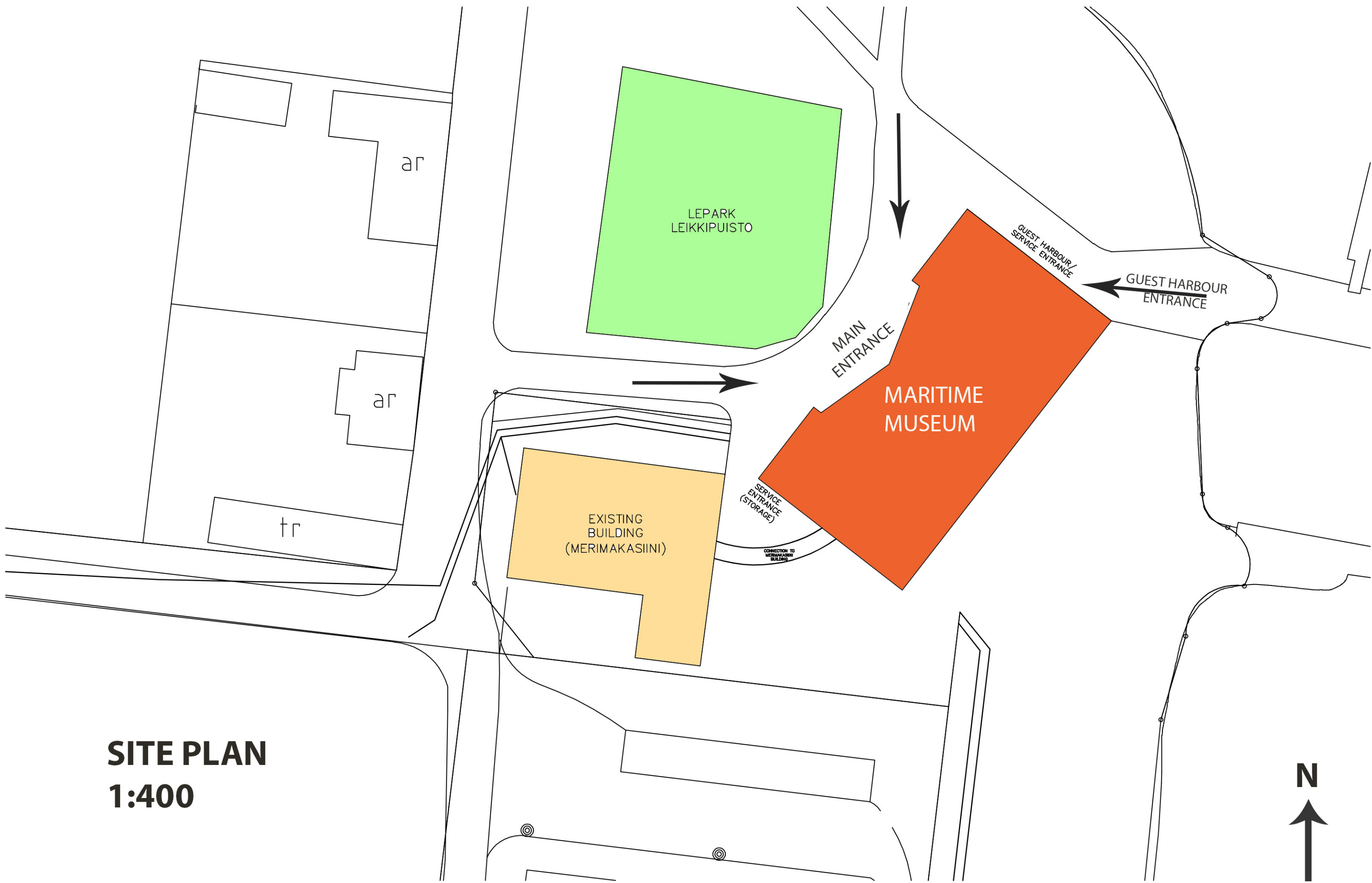
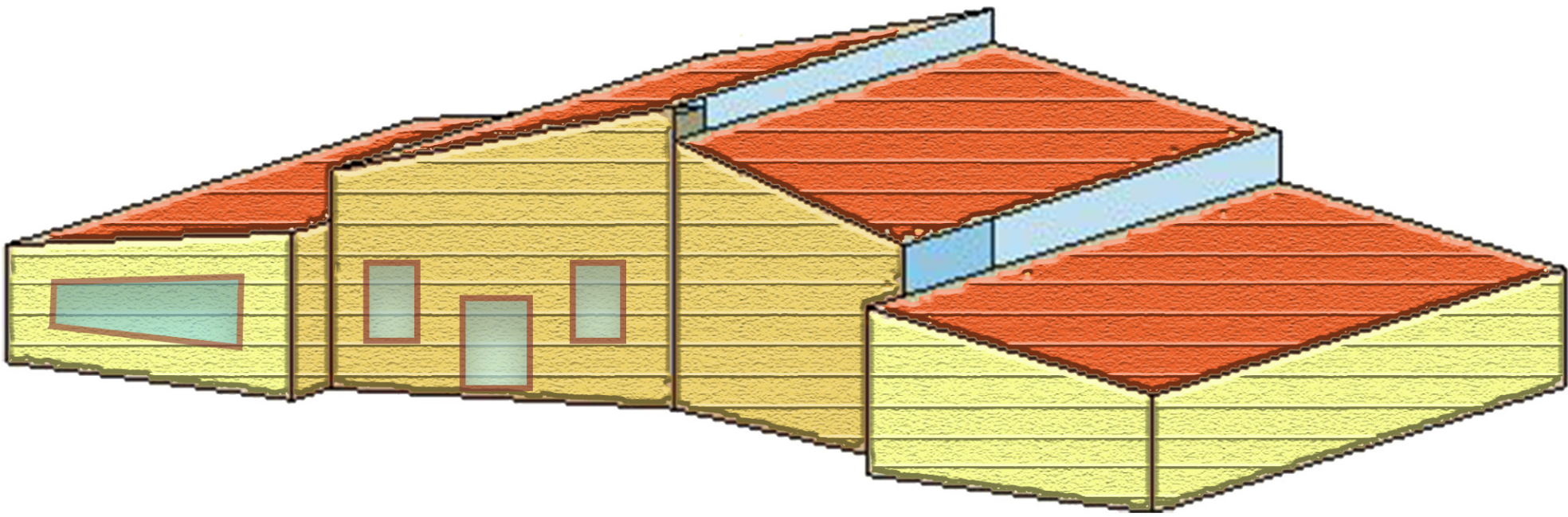
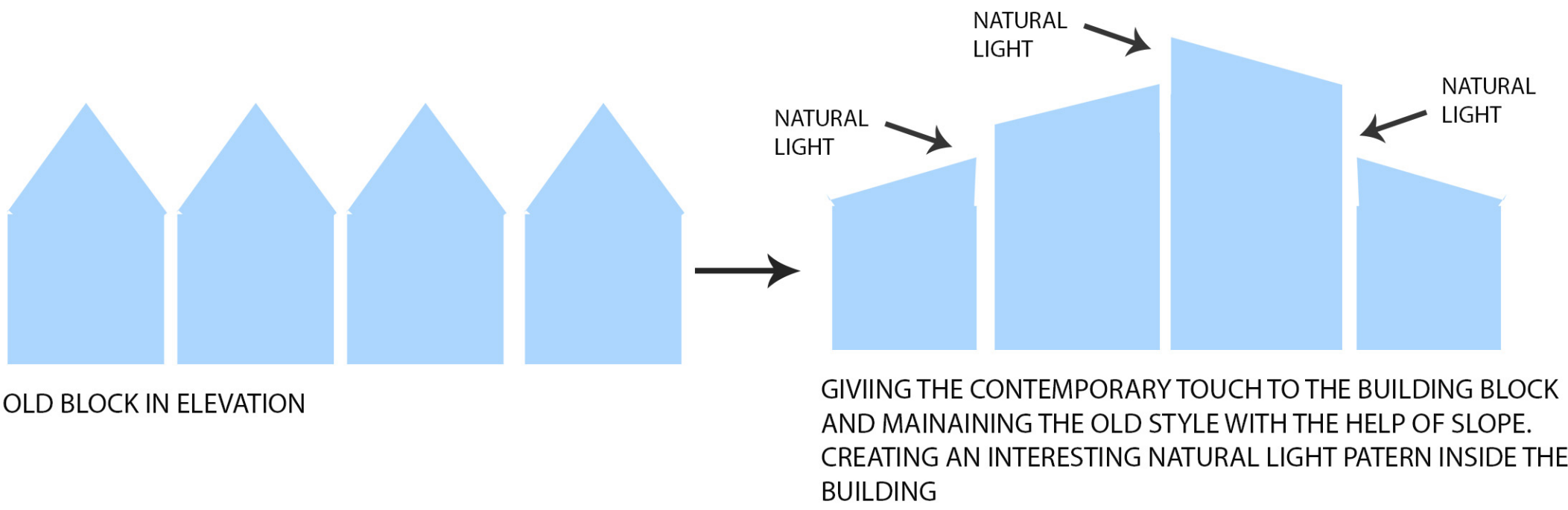
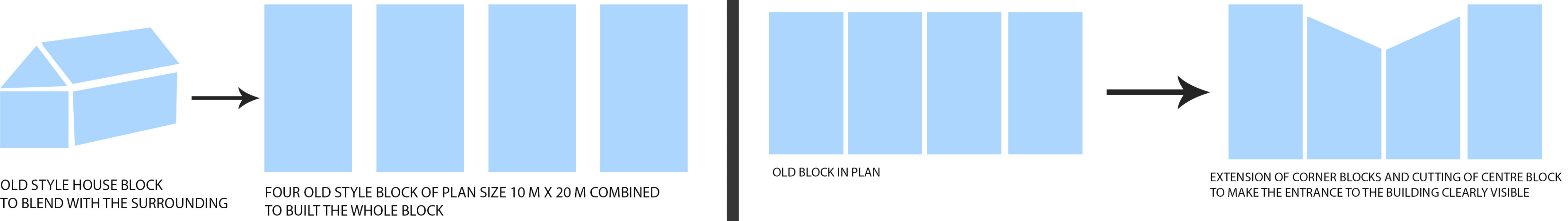


# MARITIME MUSEUM OF KRISTIINAKAUPUNKI

## CONCEPT



**SITE PLAN**  
**1:400**

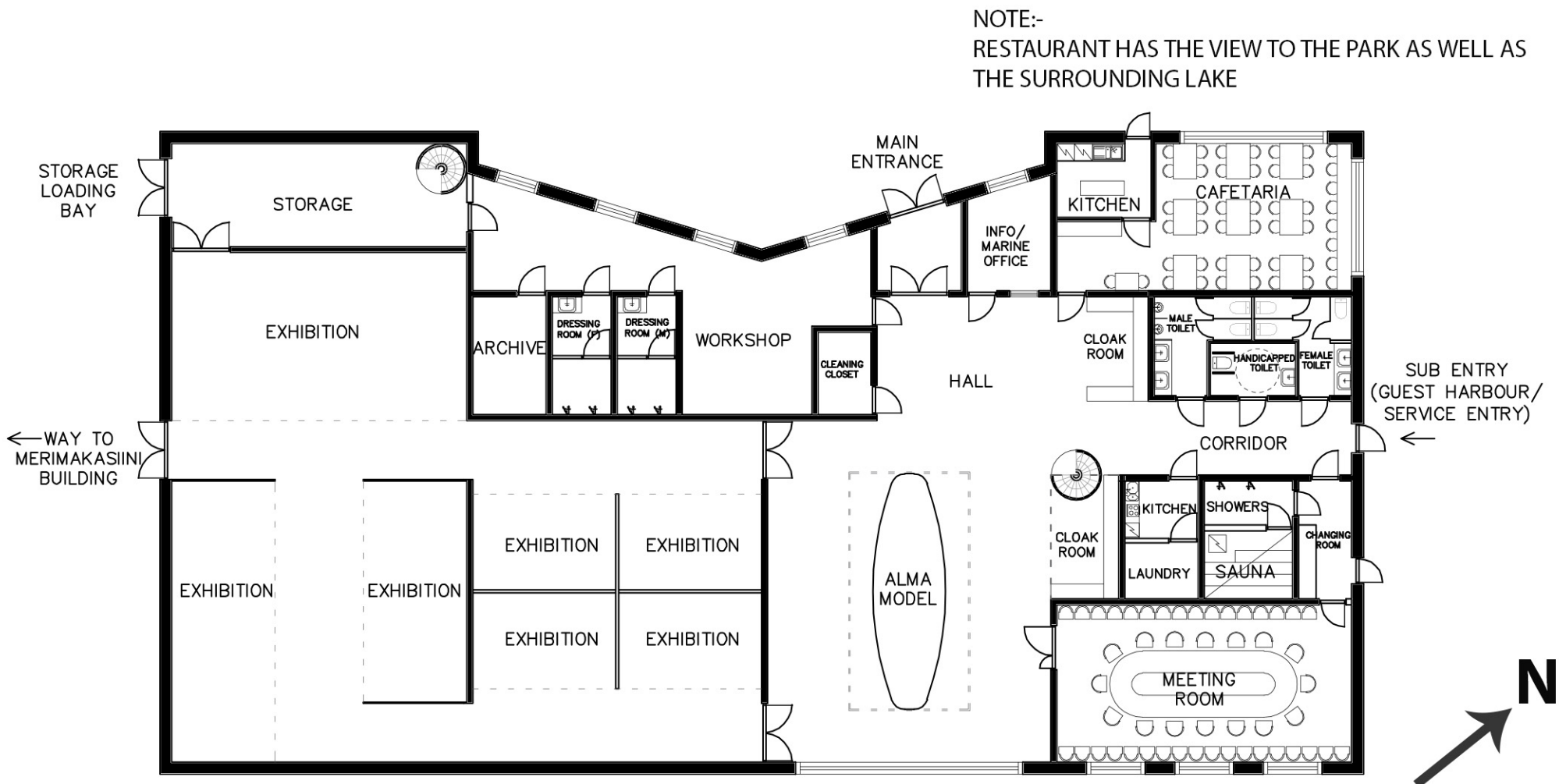
NOTE:-

THE BUILDING IS ORIENTED IN SUCH A WAY THAT IT INTERSECTS BOTH THE ROADS SO AS TO PROVIDE A CLEAR VISIBLE ENTRANCE TO THE MUSEUM.

SEPERATE ENTRANCE HAS BEEN PROVIDED FOR THE GUEST HARBOUR. AND STORAGE.

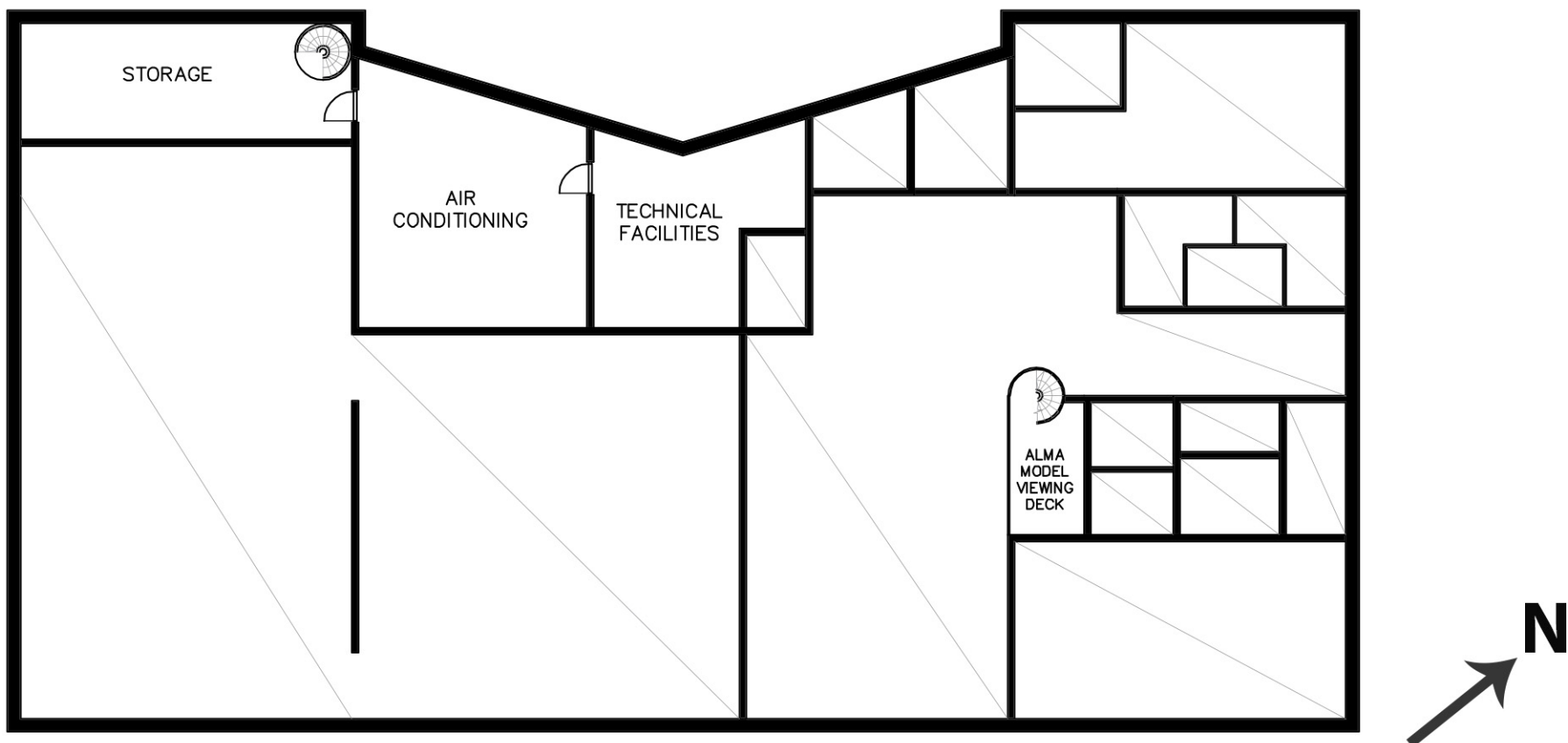


# MARITIME MUSEUM OF KRISTIINAKAUPUNKI

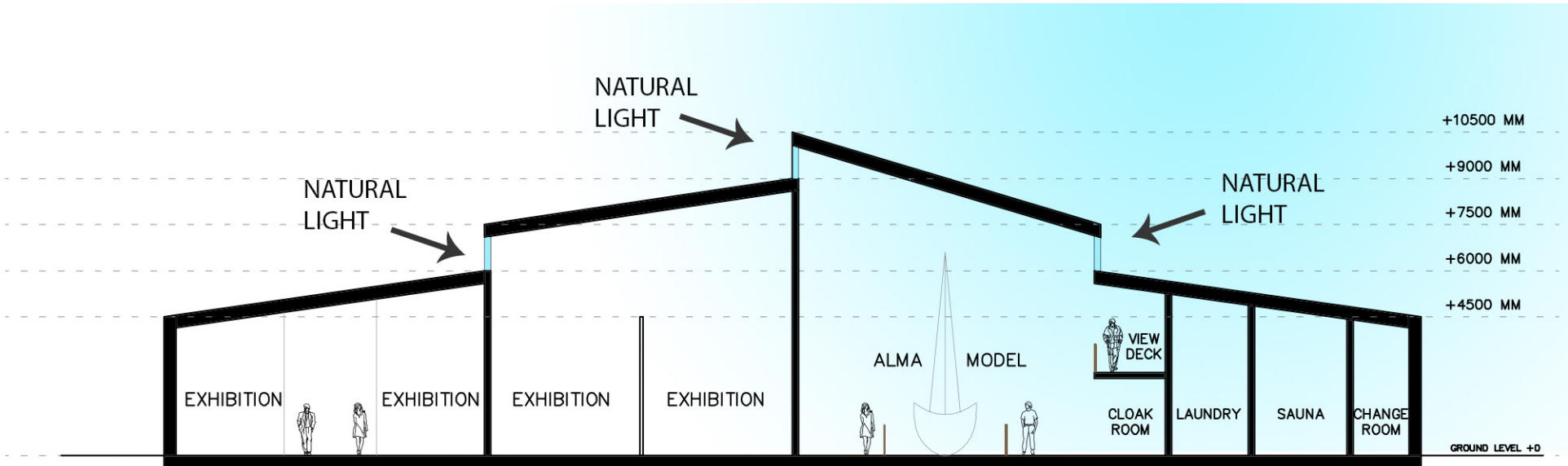


FIRST FLOOR PLAN 1:200

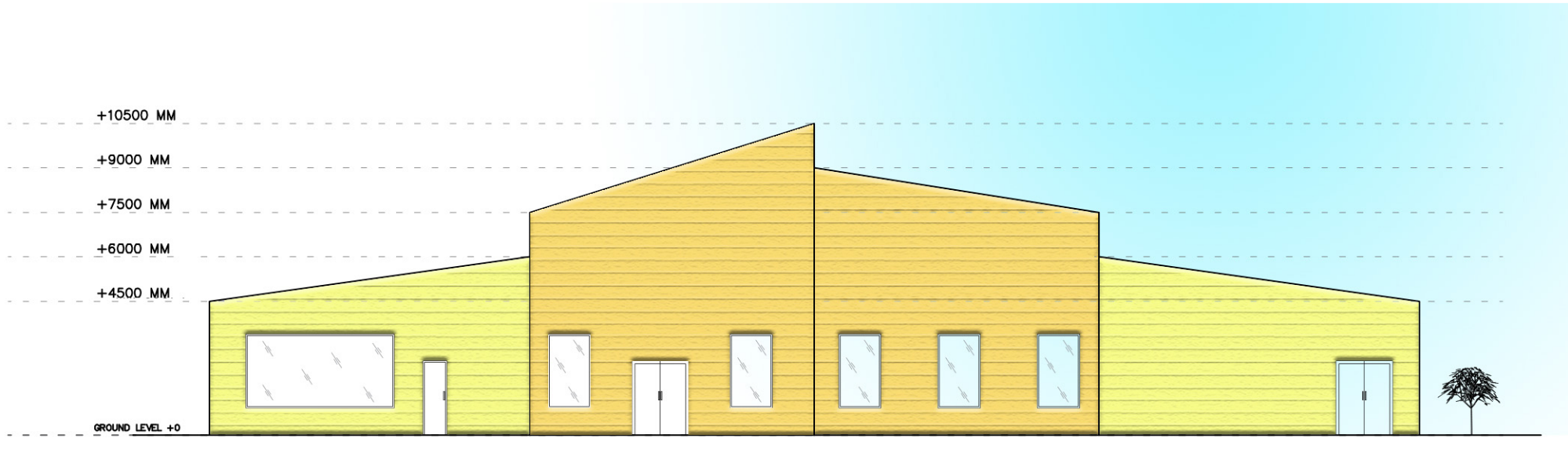
NOTE:-  
THE ALMA MODEL IS LOCATED CENTRALLY IN SUCH A WAY THAT CONNECTS  
IT WITH THE SURROUNDING LAKE THROUGH THE GLASS WINDOW. A SPECIAL  
VIEW DECK IS ALSO PROVIDED FOR THE ALMA MODEL TO SEE IT FROM TOP.



SECOND FLOOR PLAN 1:200



SECTION A-A 1:200



FRONT ELEVATION 1:200

## AREA CHART

### SPACES

#### PUBLIC SPACES

HALL	30
INFO/MARINA OFFICE	10
CLOAKROOM	20
TOILETS	22
SAUNA	20
KITCHEN	10
CAFETERIA + KITCHEN	42 + 8
MEETING ROOM	50
MUSEUM SPACE	300
ALMA MODEL	50
VIEWING DECK	10

#### STAFF ROOMS

WORKSHOP	30
ARCHIVE	10
DRESSING	16

#### OTHER FACILITIES

STORAGE	55
CLEANING CLOSET	05
AIR CONDITIONING MACHINERY	50
TECHNICAL FACILITIES	25

#### TOTAL AREA

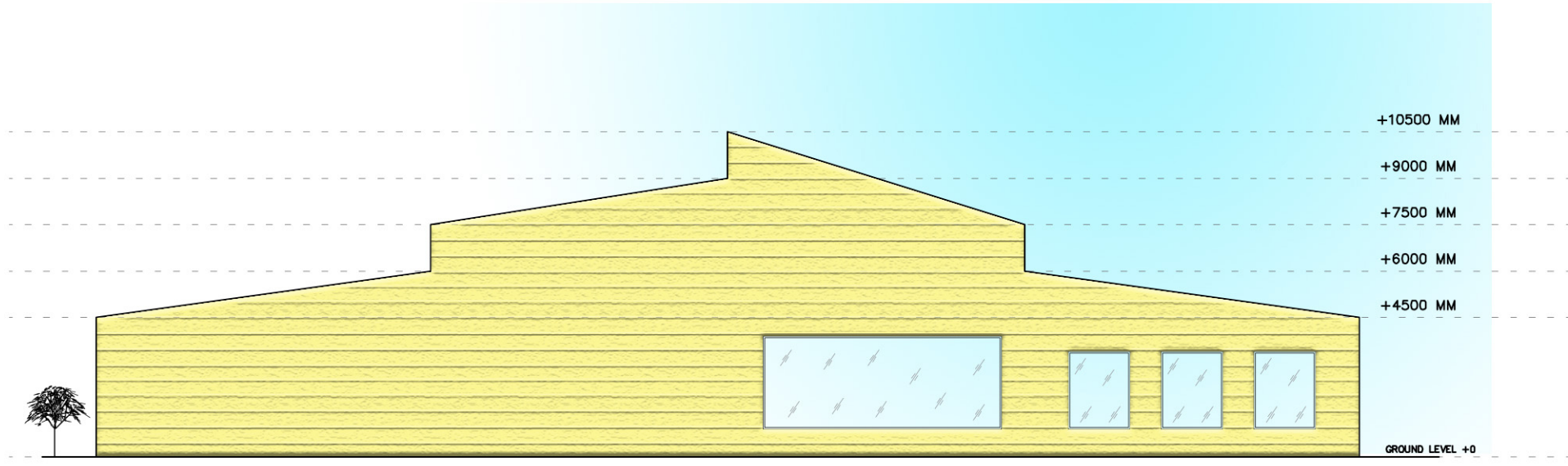
762

#### CIRCULATION AND CORRIDOR

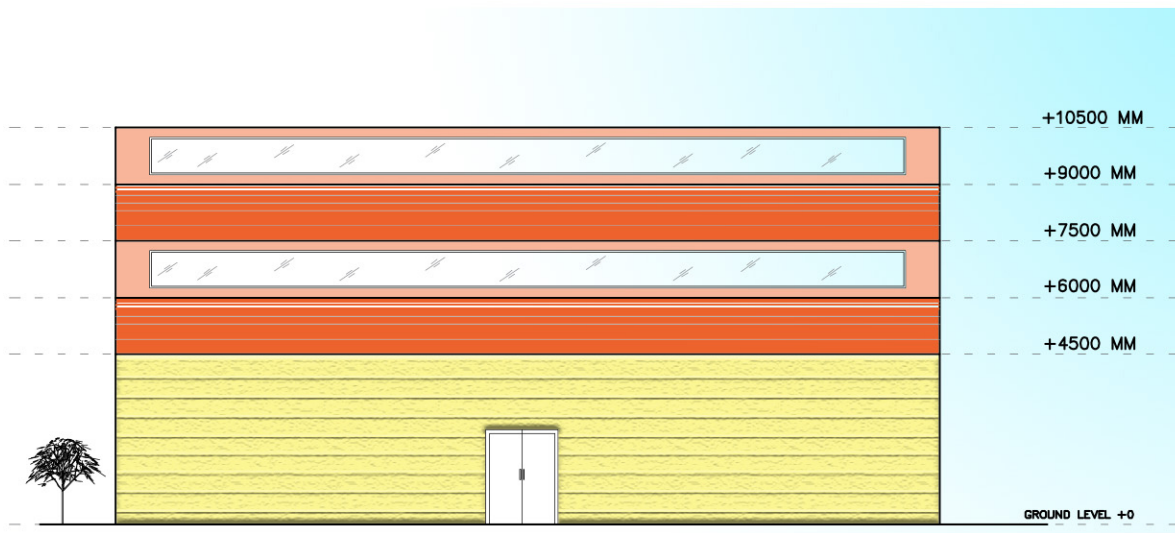
130

#### GROSS TOTAL AREA

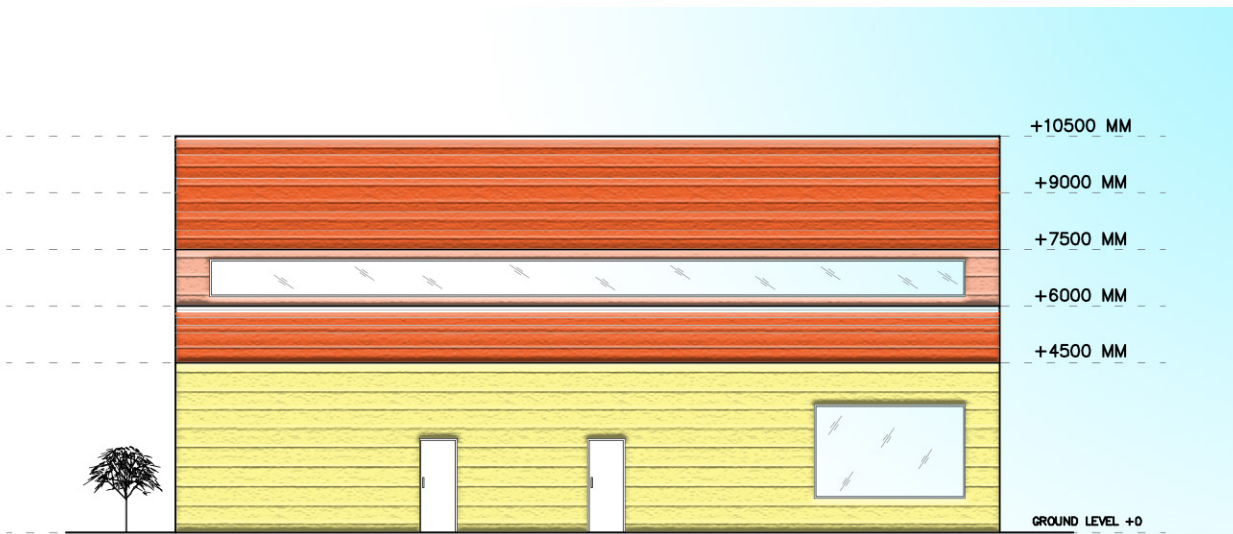
892



BACK ELEVATION 1:200



SIDE ELEVATION (SW) 1:200



SIDE ELEVATION (NE) 1:200

NOTE:-  
THE COLOUR USED FOR ELEVATION IS YELLOW FOR THE WALLS AND BRICK RED FOR THE ROOF  
SO AS TO BLEND IT WITH THE SURROUNDING BUILDINGS. THE FINISH USED IS WOODEN FINISH.