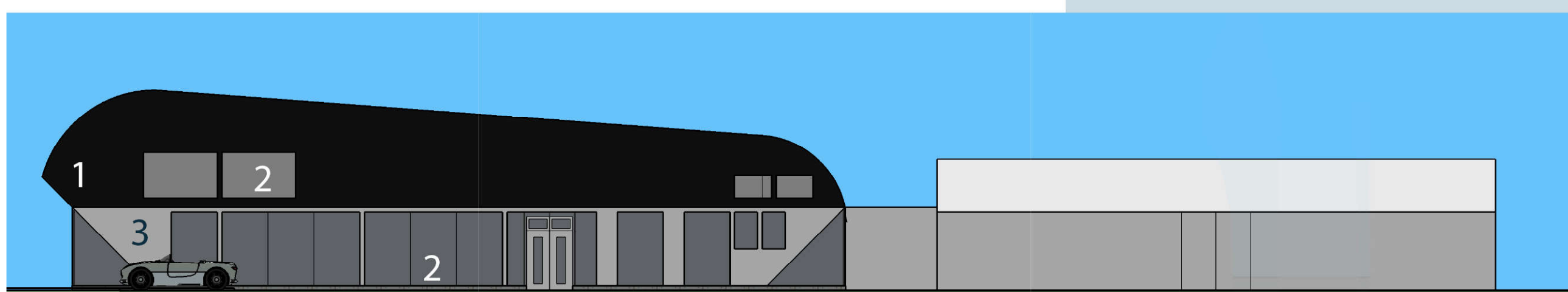


The maritime museum (sometimes nautical museum) is a museum specializing in the display of objects relating to ships and travel on large bodies of water. Given this, the main concept of the form for this project has come from ships.

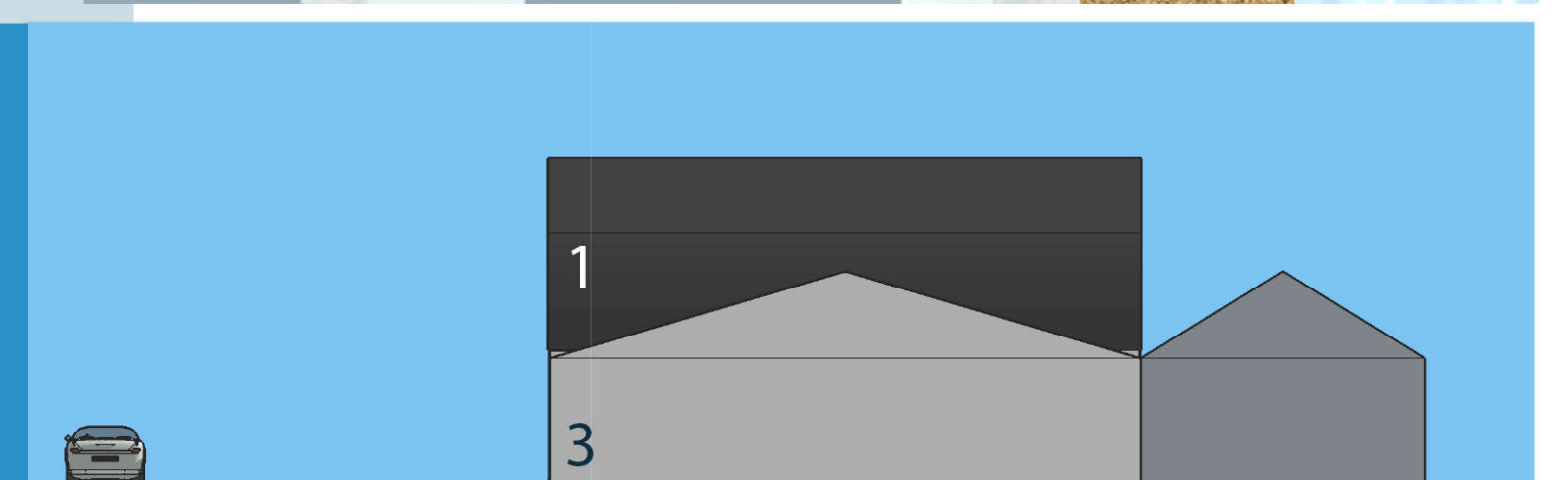
The main approach for the design is to respect the existing building while not only with inner side accessibility but also creating a functional spatial bridge between them.

Moreover, has been into account to add a new values and character to the site while having a common dialogue between the new museum and the existing one.

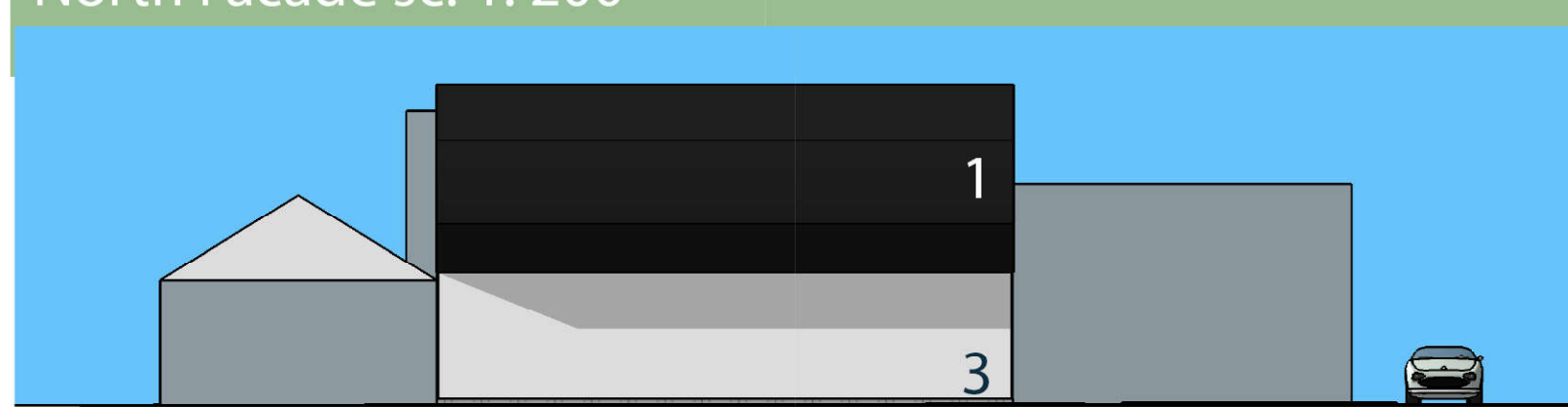
Besides, by using the environmental friendly materials has been considered to have a sustainable design for the complex.



North Facade sc: 1: 200

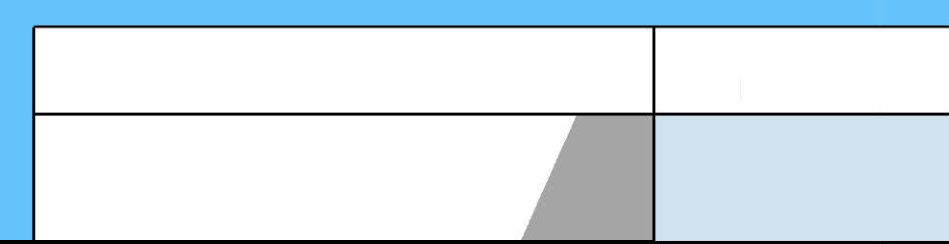


East Facade sc: 1: 200

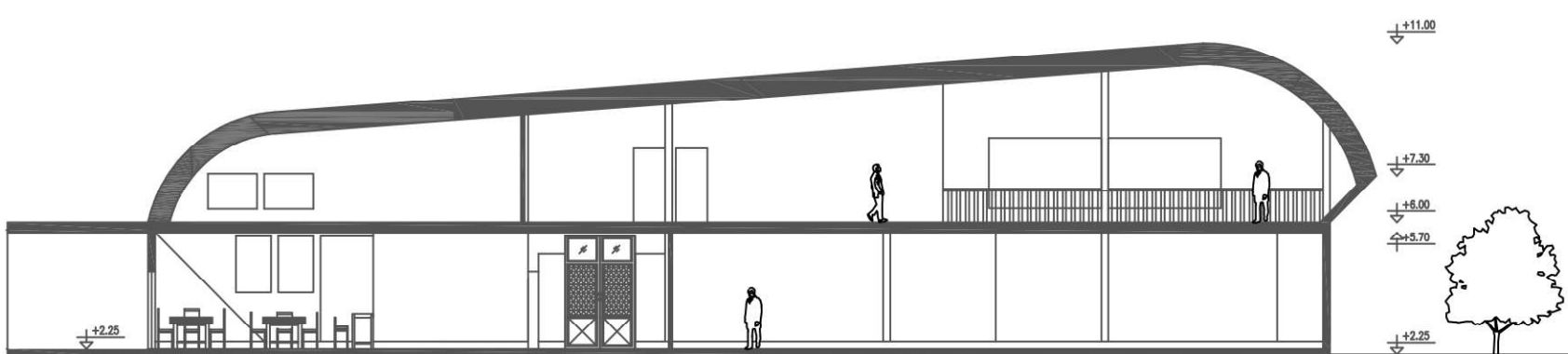


West Facade sc: 1: 200

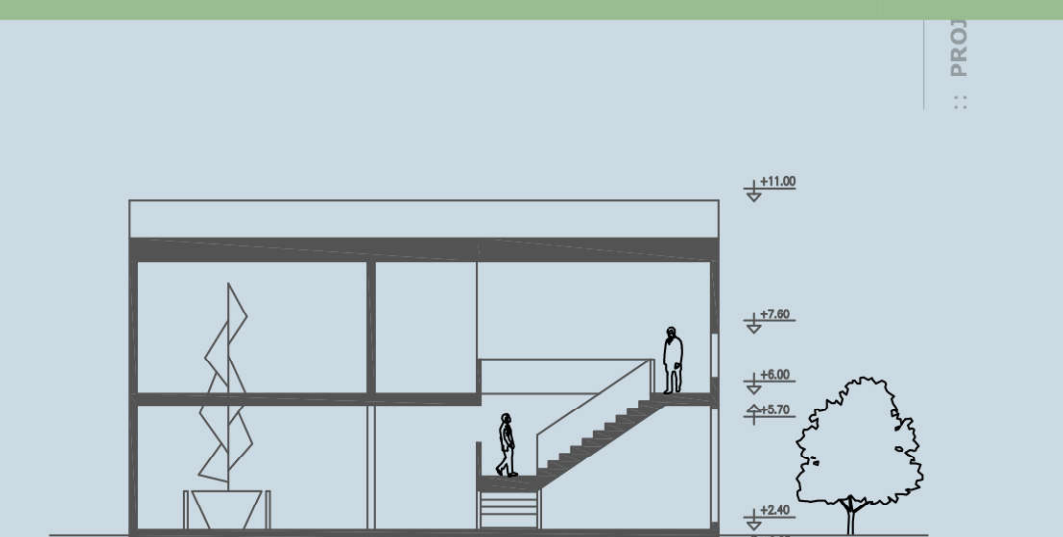
1. Perforated Aluminum Sheet
2. Glass
3. Plaster



South Facade sc: 1: 200



Section A-A sc: 1: 200



Section B-B sc: 1: 200

