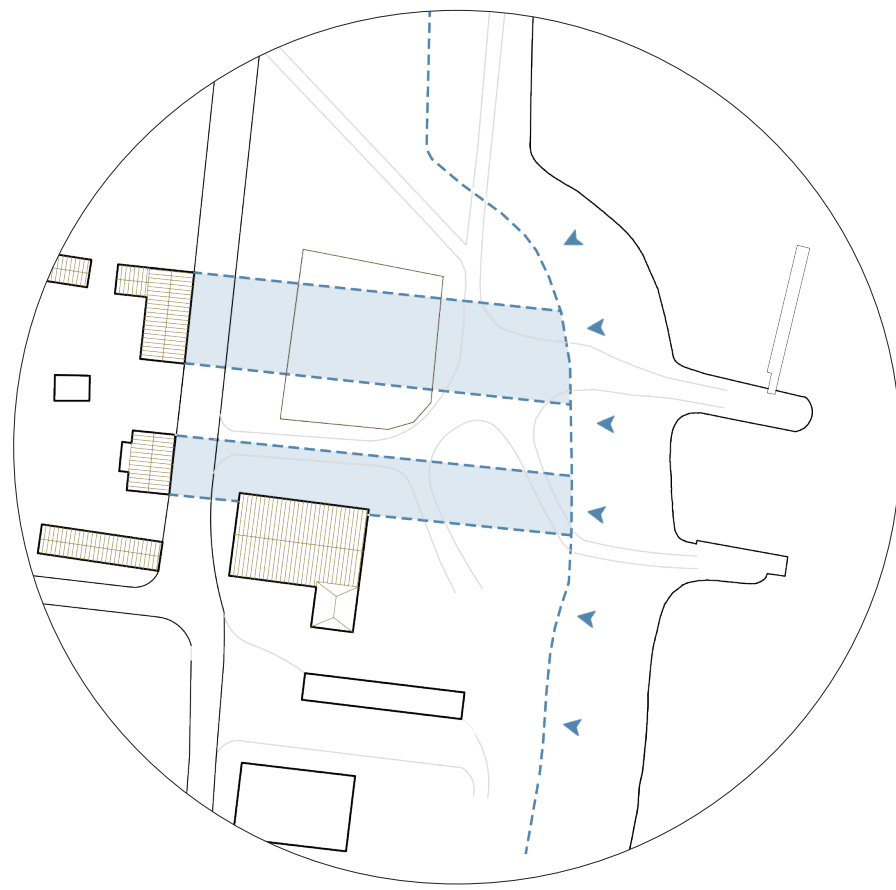
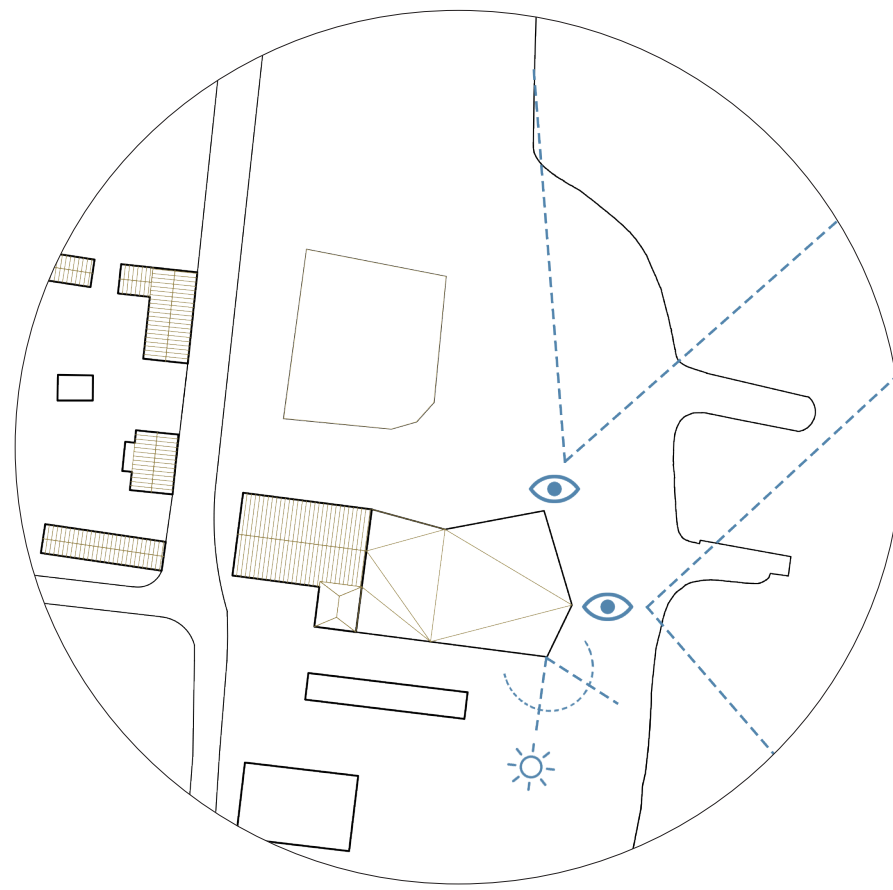


Accessibility and Flows  
Current Competition Site



Limits of the Competition Area  
Conserving Views of the existing Houses

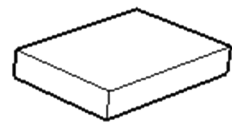


Creating views on the landscape, park, sea  
Capturing Sunlight

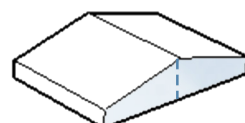
# ICEBREAKER

## Maritime museum Kristiinankaupunki

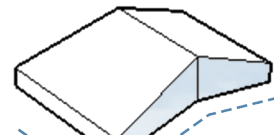
The design takes in consideration several constraints: conservation of views to the sea from existing houses and the distance from the coastline (19m). That's why we decided to place our building in continuity with the existing museum, it creates a link between Merimakasiini museum and the sea. The proposal highlights the qualities of the site: its viewpoints are over the bay and the Saunapuisto.



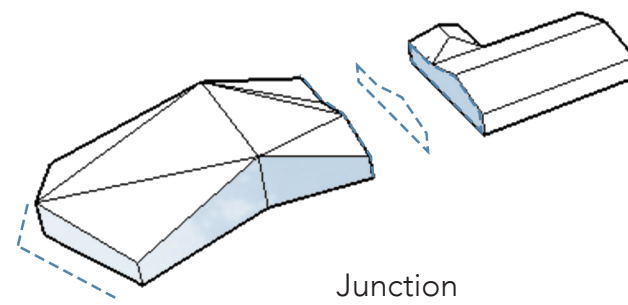
Block



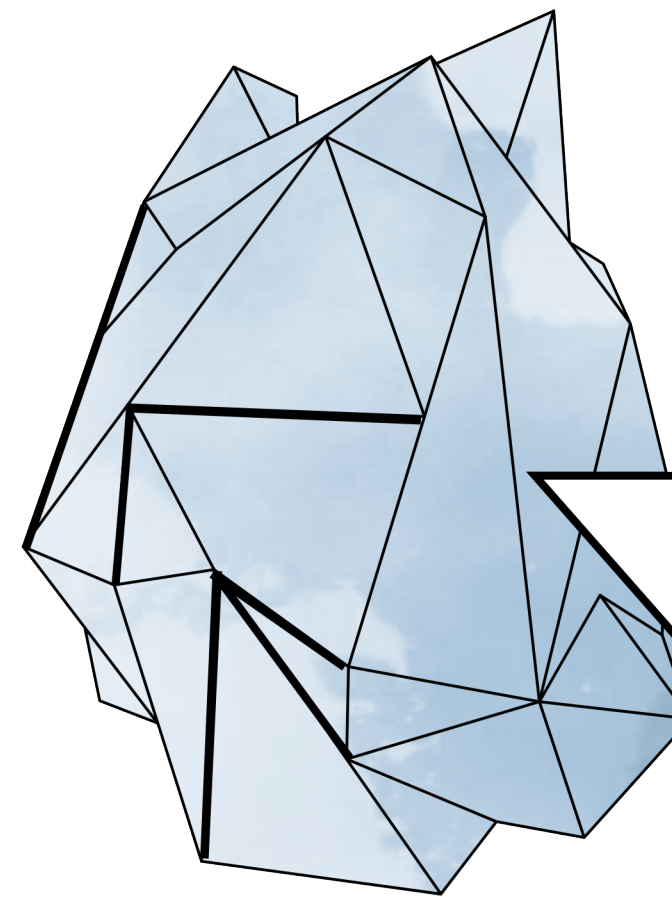
Pitched roof



Funnel



Junction

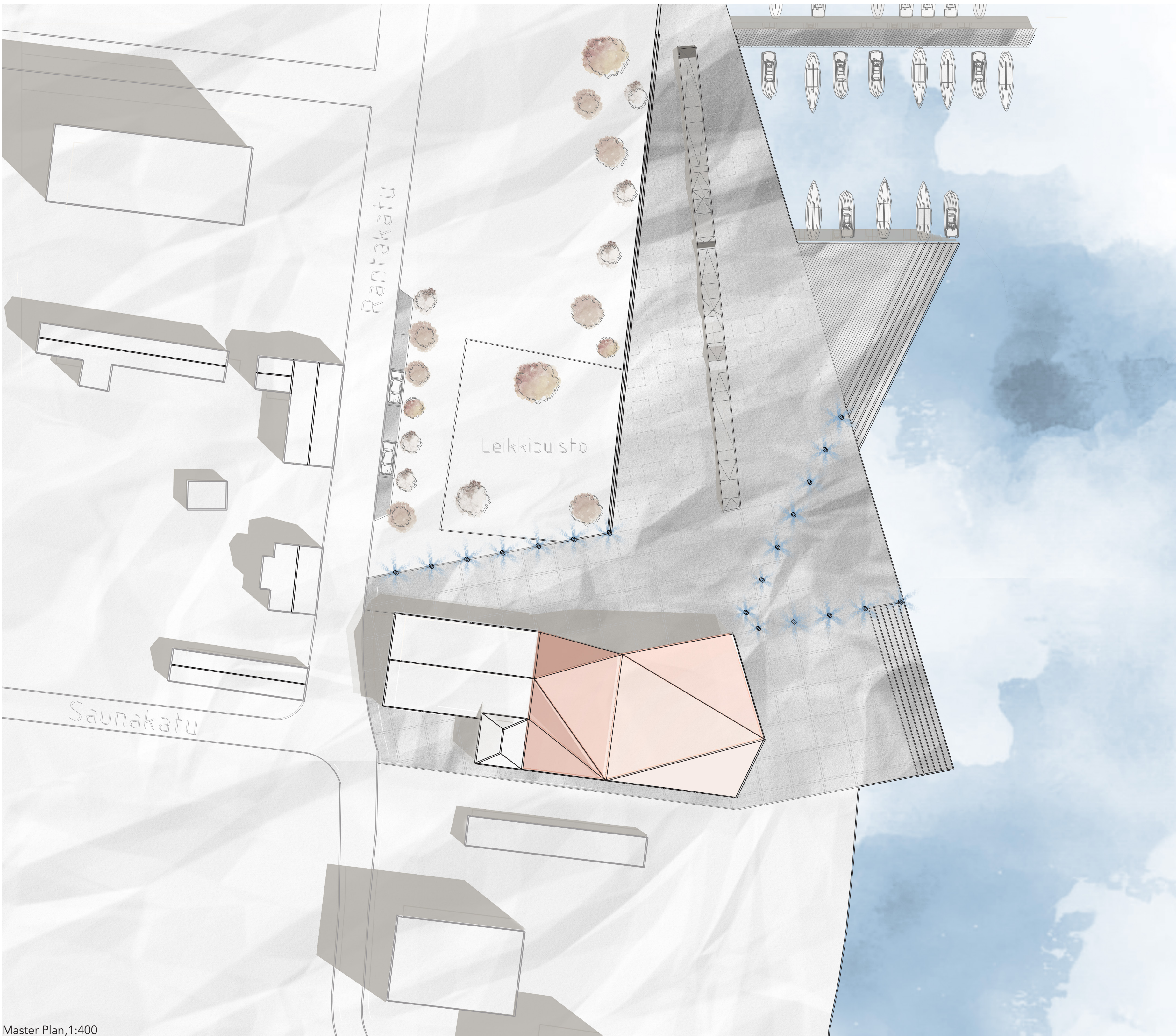


### Triplettes

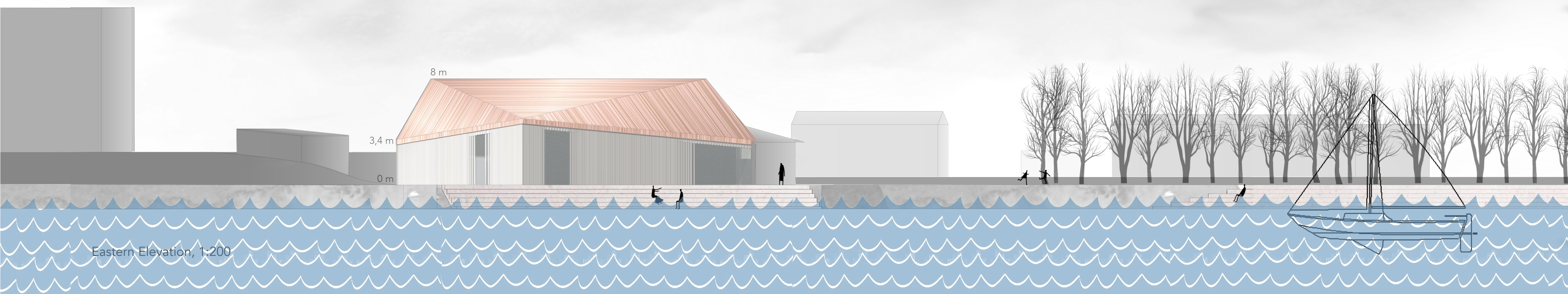
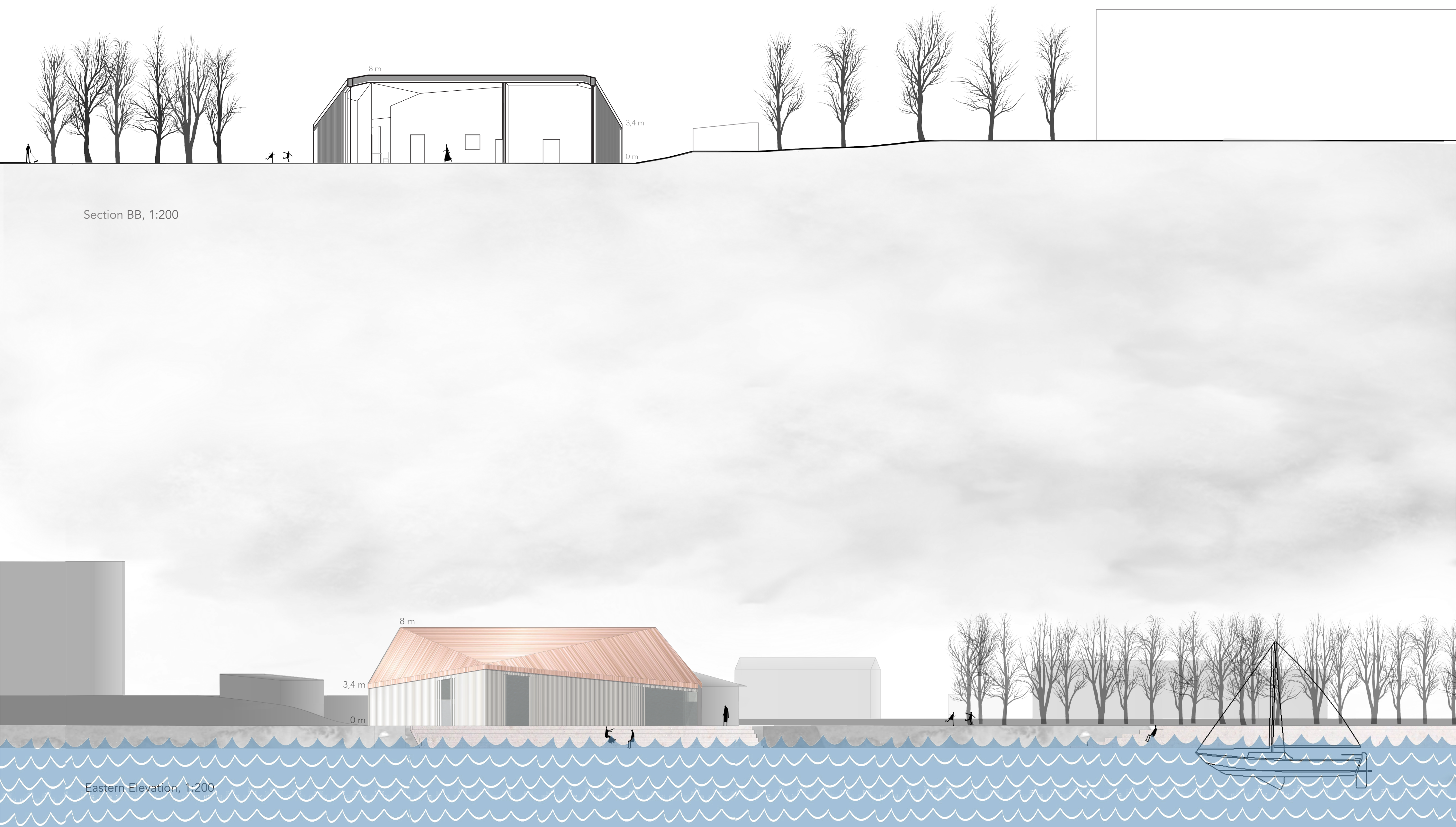
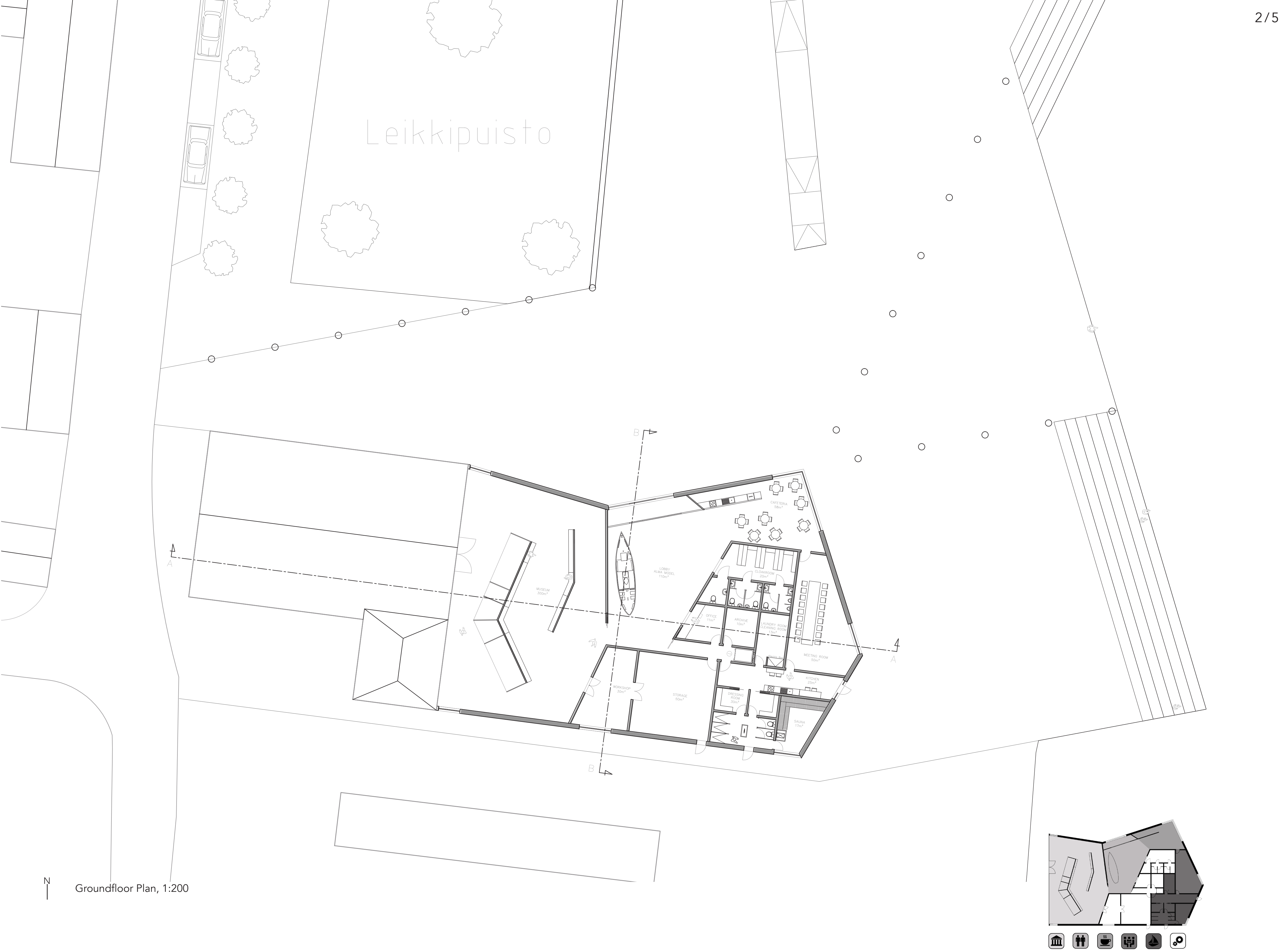
Competition 2017

BREAKER

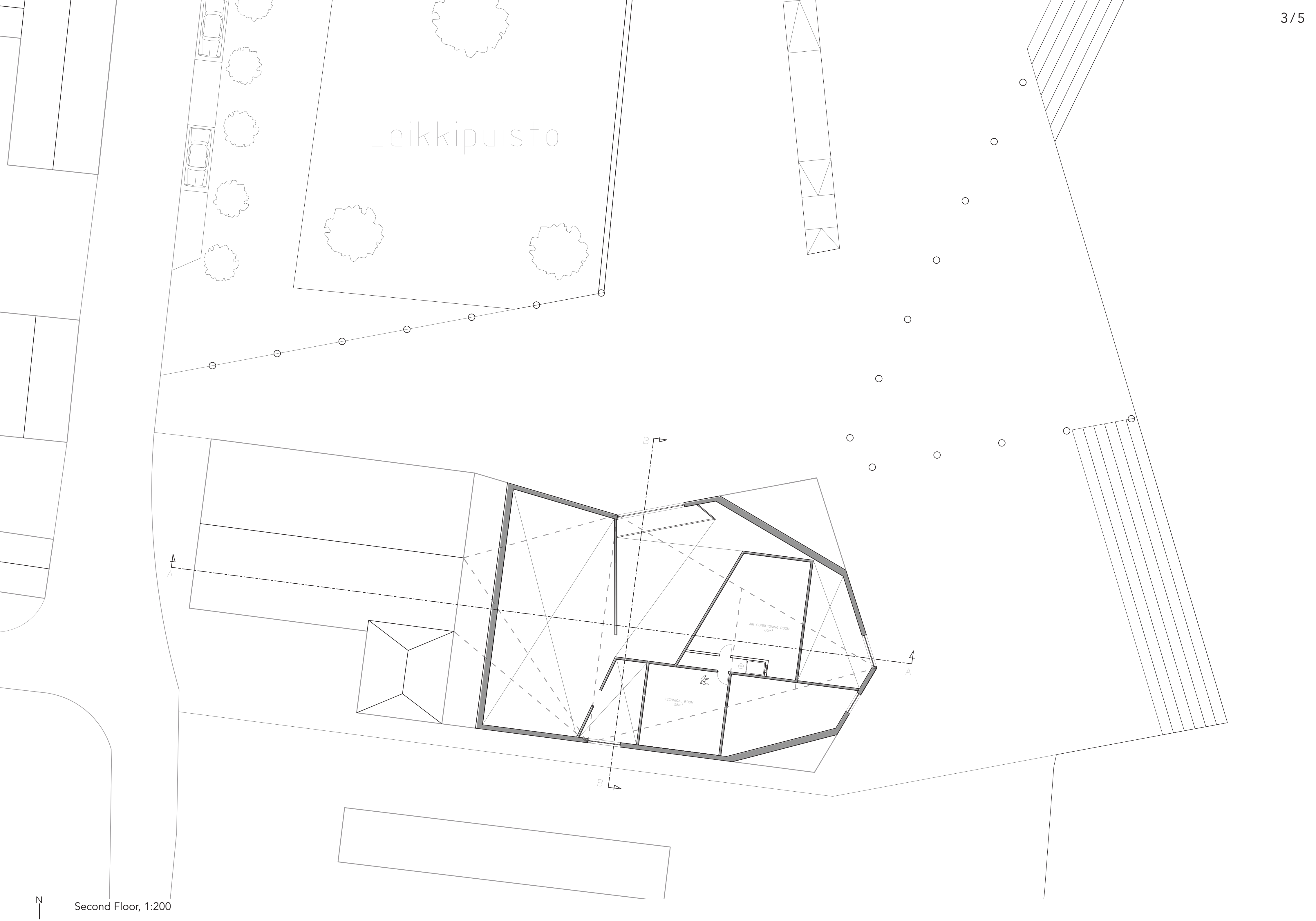
We give the museum a particular shape : a pitched roof that joins the old and new one building, a funnel on the northern facade that invites and a glassed corner that opens view from the playground until the bay. Our design puts museum, cafeteria, marina office, lobby and guest harbour facilities, under one unique roof. The main spaces are on ground level combining a volume of 800m². Technical facilities are located on the second floor in the attic of the roof. The landscape surrounding the building is characterised with sharp edges. We used concrete and gravel for pavement, wood for the bench and ponton, and limestone for stairs which enter in the sea. The materials of the building are vertical aspen timber for the facade, pink copper for the roof, and in the interior we used again limestone for flooring and aspen wood for the ceiling.



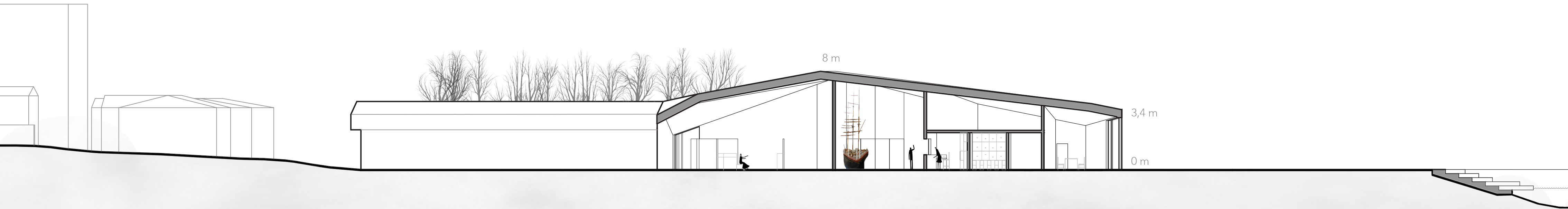




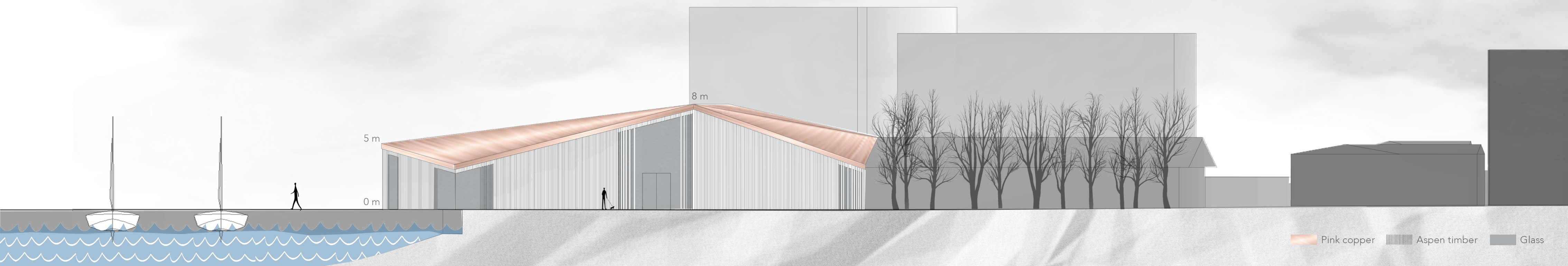




Second Floor, 1:200

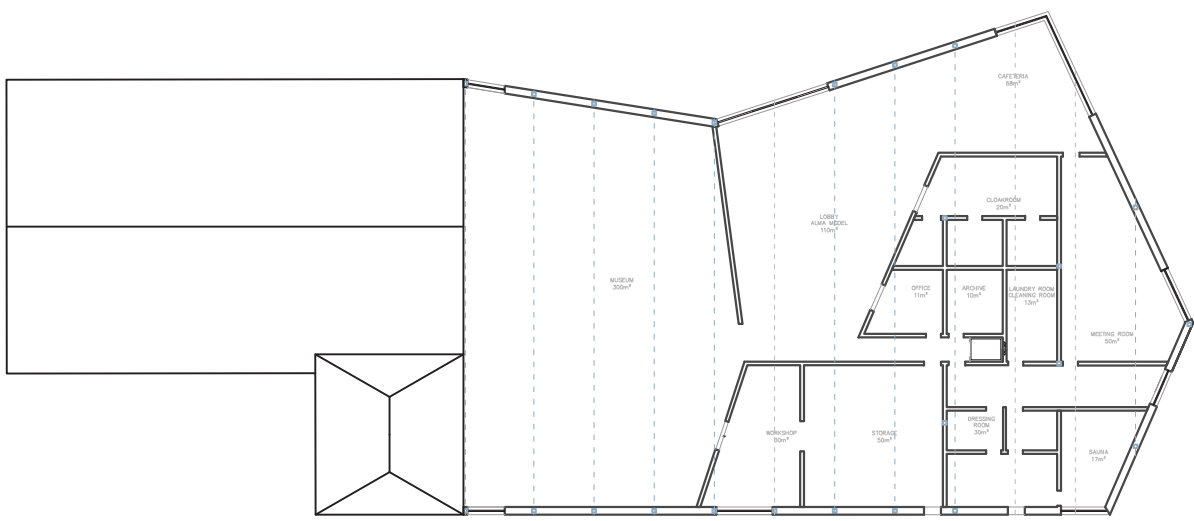


Section AA, 1:200

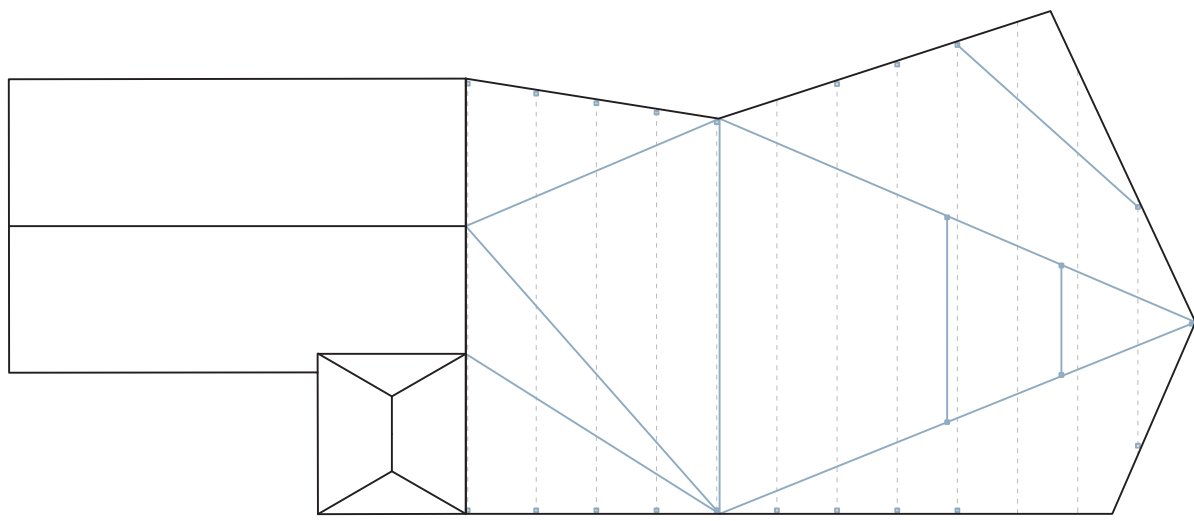


Northern Elevation, 1:200

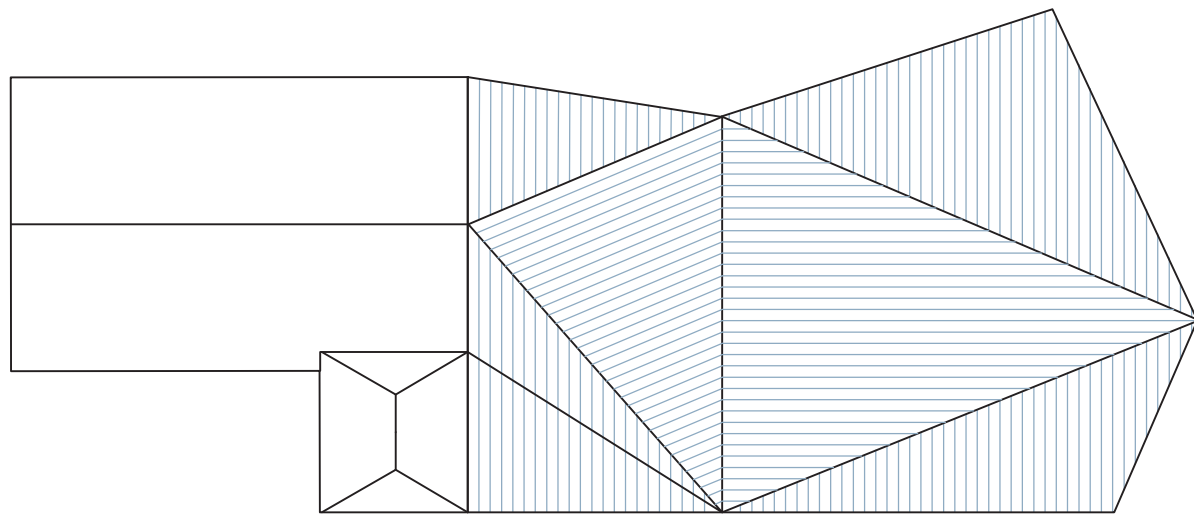




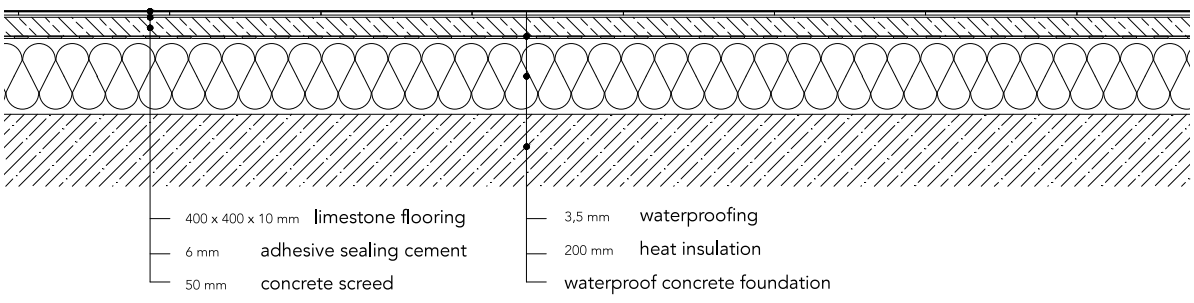
Structure Grid, 1:400



Primary beam, 1:400

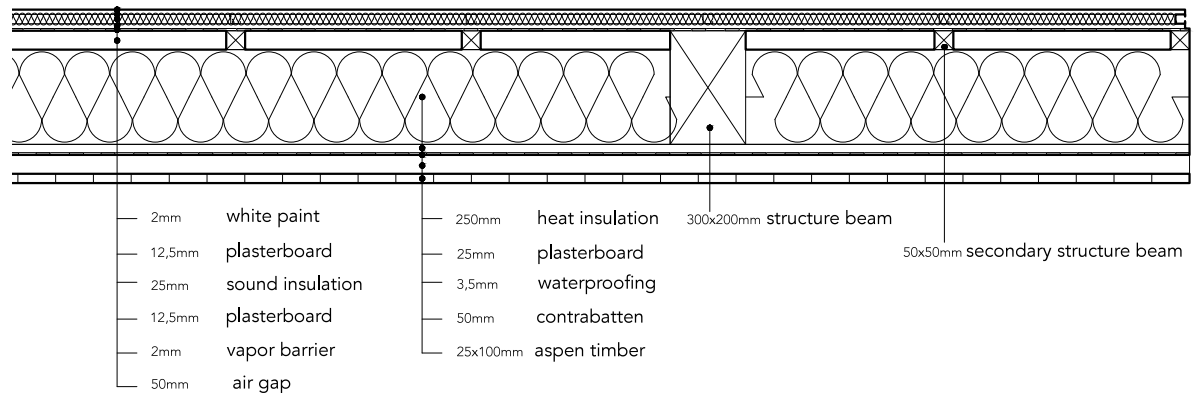


Secondary beam, 1:400

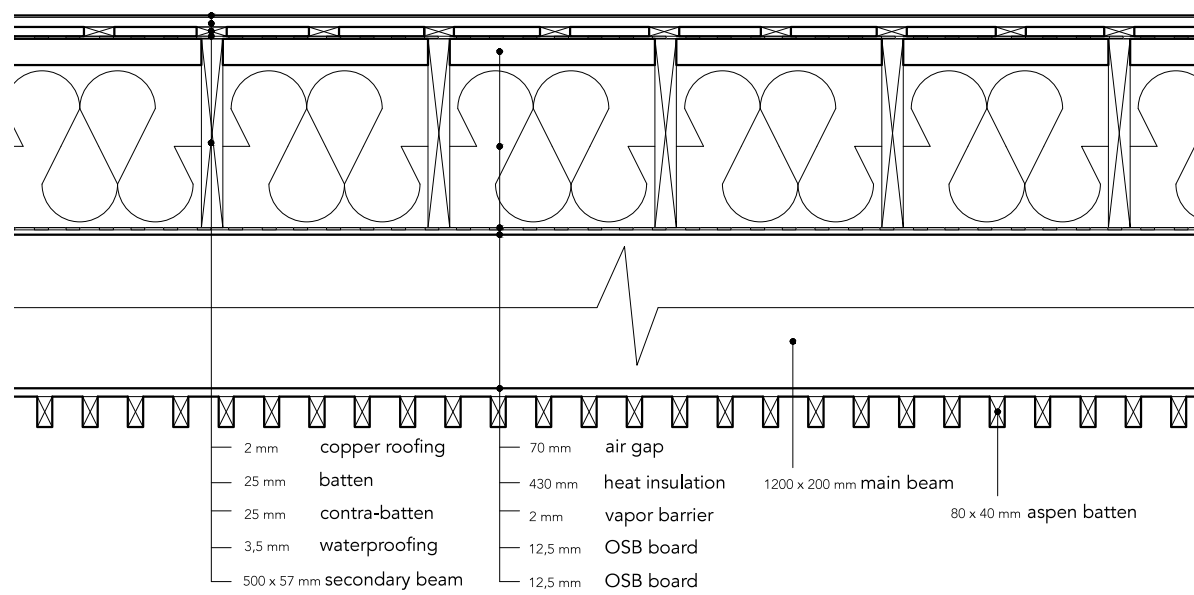


The structure of the design consists of wooden elements: primary beams (size 1200 x 200 mm) and secondary beams (size 500 x 57 mm).

Floor Detail, 1:20



Wall Detail, 1:20



Ceiling Detail, 1:20



Southern Elevation, 1:200



