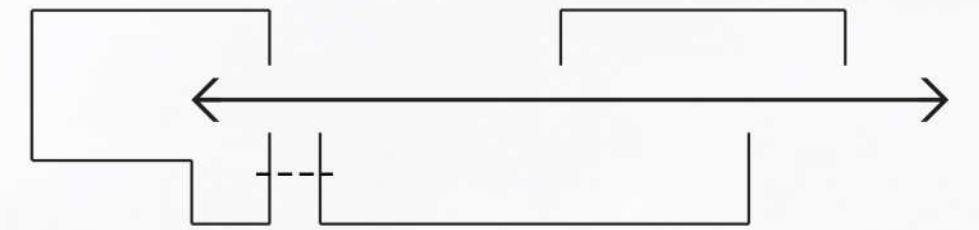


DOCKS REVISITED

The proposed new building is located in the continuation of the existing building, acting as a link to the sea and proposing a new function for this unoccupied area of the site.

In order to respect the Merimakasiini building and not obstruct its accessibility, space has been preserved in front of the main door leading to the workshop. The connection with the new building is made in glass through the existing concrete part of the actual construction to preserve it; and include the workshop as part of the exhibition.

The main door of the workshop offers an interesting open view to the sea, contrasting strongly with its inside space missing light. This observation led to a long bright corridor in the new building with the sea as an end.



Being the main piece of the exhibition, the ALMA-model is centrally located in the building and surrounded by the circulation, distributing all the functions of the program.

The services, facilities and technical spaces are pushed to both sides of the building, which are respectively the north oriented side and the side going along the border of the site, offering no views.

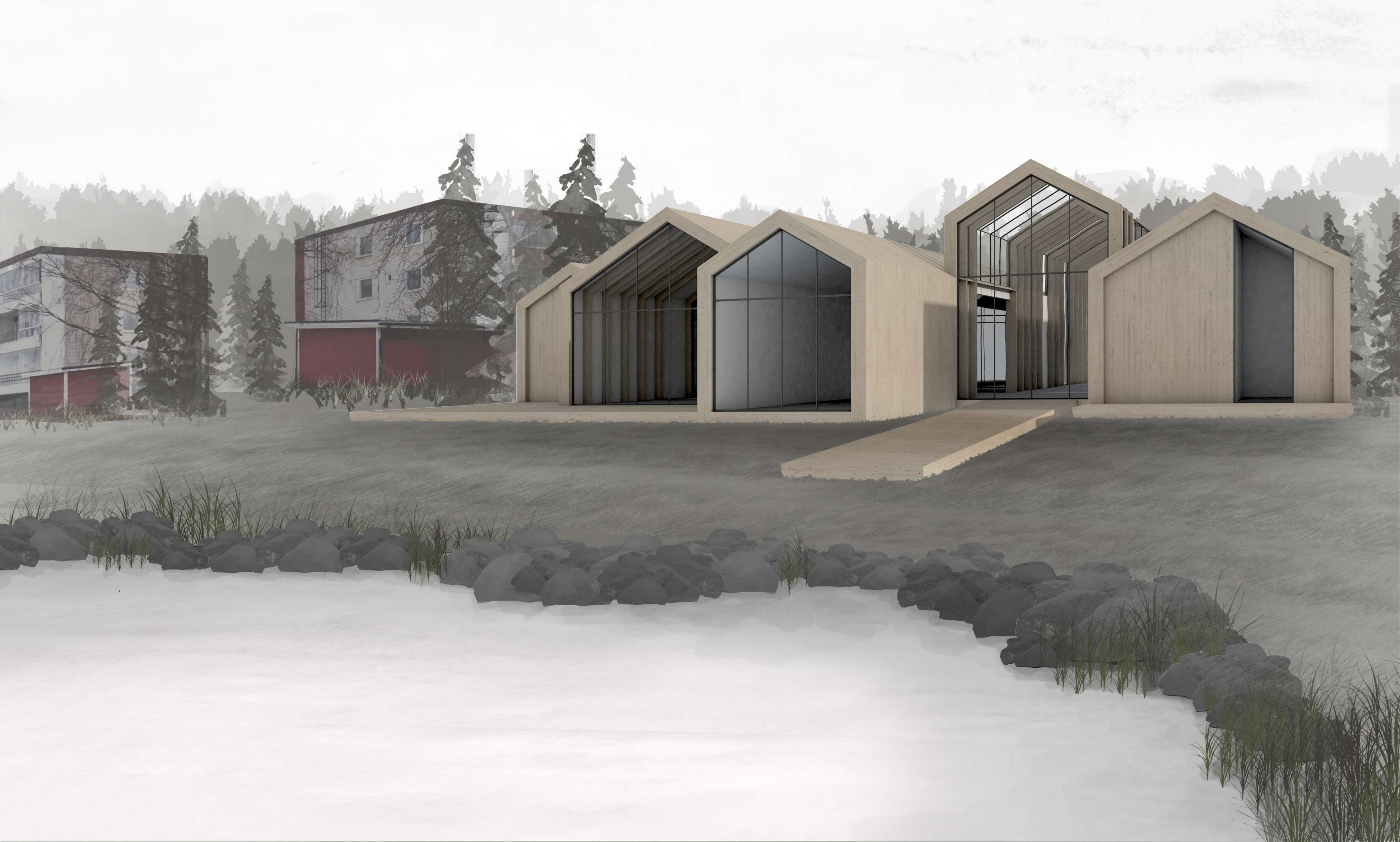
In contrast, the functions that require light are located on the side overlooking the docks and the sea.

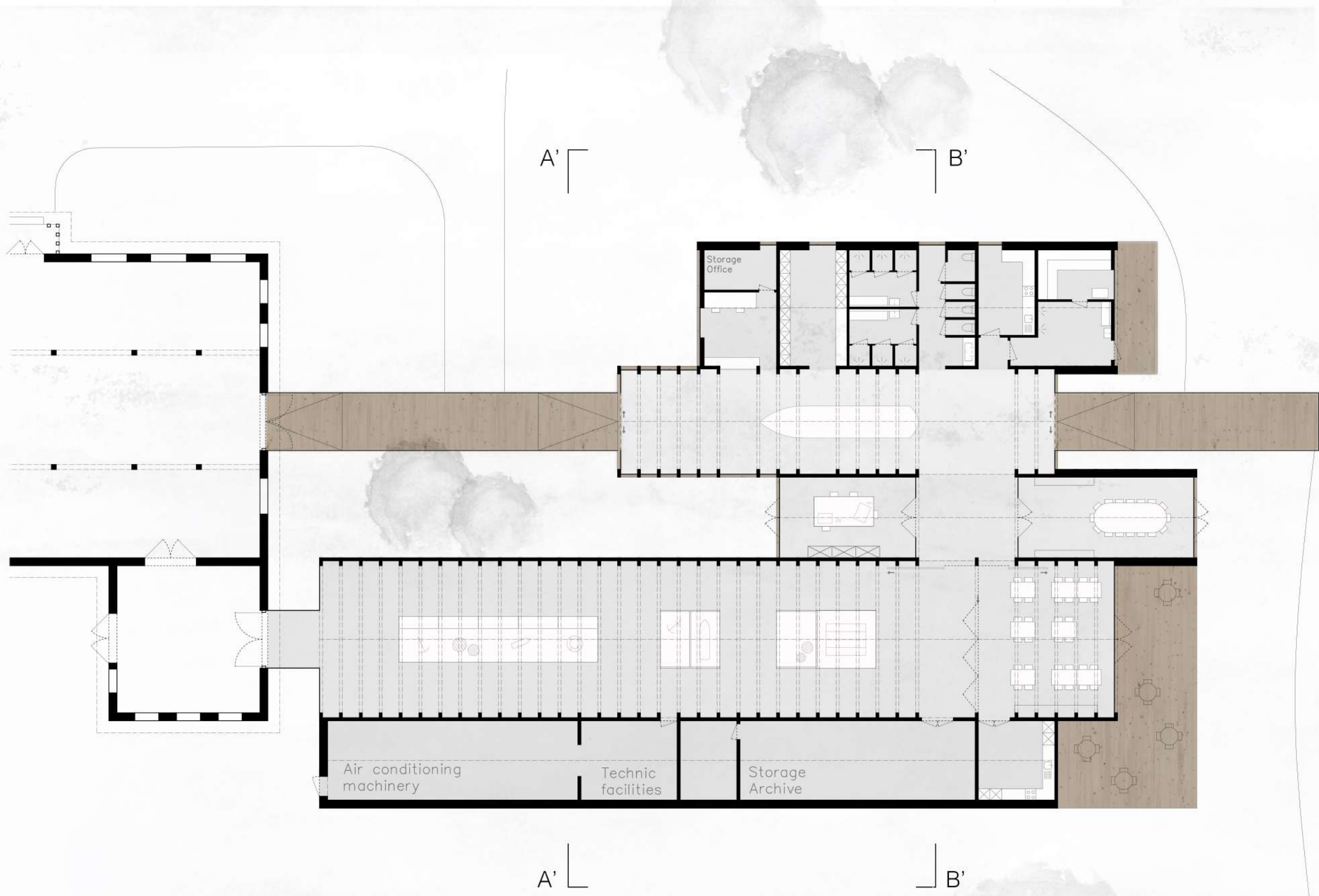
Finally, the museum part of the program is a long and narrow space, directly connected to the Merimakasiini building and is organized in a similar way than the actual one.



All those intentions result in a building divided in four parts, four long blocks that differ in height according to the functions they host, in order to limit their visual impact on the site and respect the profile of the actual building.

Made in wood with a simple and flexible interior design, combined with the variation of light, the building offers four different atmospheres related to the needs of the inside spaces.

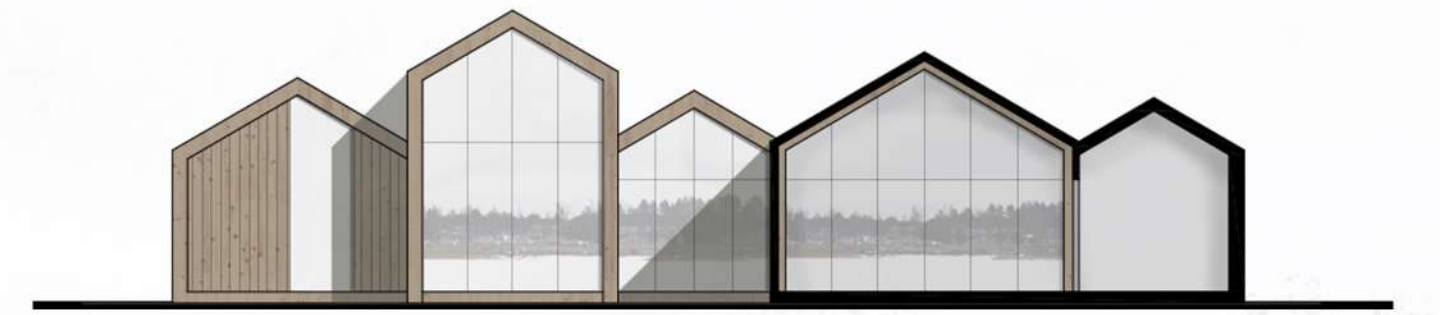




	Areas (m ²)	Heights		Areas (m ²)	Heights
Hall	37	min 5.9 m max 7.3 m	Workshop	30.1	min 3.9 m max 5.1 m
Ship model	42.4		Meeting room	43.4	
Office	14.3	min 3.5 m max 5.2 m	Cafeteria	52	min 3.9 m max 6.2 m
Cleaning closet	6.7		Museum space	291.4	
Cloakroom	19.9	min 3.5 m max 5.2 m	Storage	47.4	min 3.6 m max 4.8 m
Dressing rooms	19.9		Archive	11.4	
Toilets	16.7		Technical facilities	19.4	
Kitchen	12.3		Air conditioning	50.4	
Sauna	21.6				



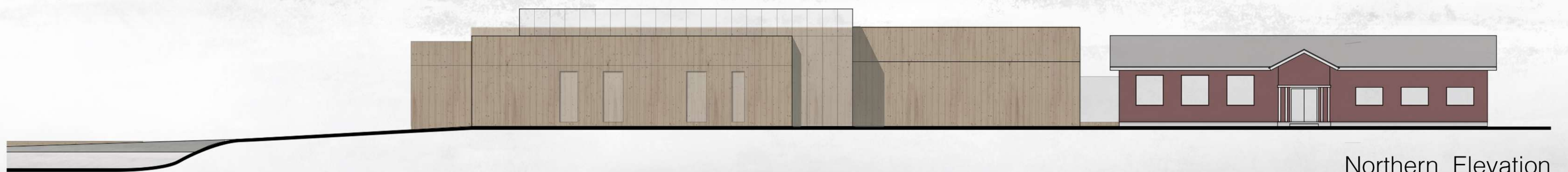
Eastern Elevation



Section AA'



Section BB'



Northern Elevation

